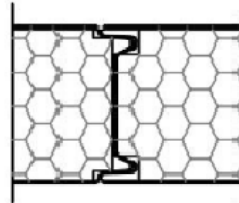
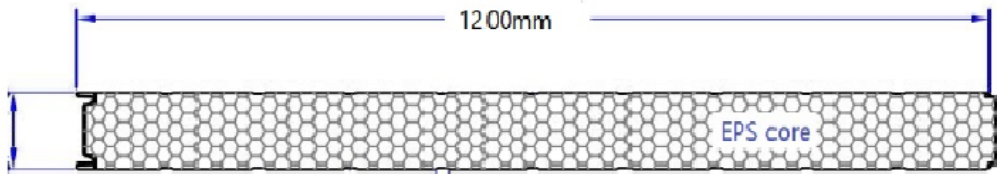
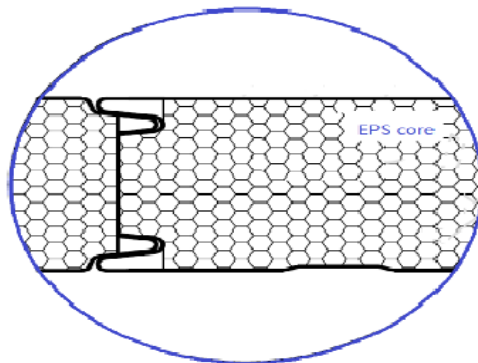
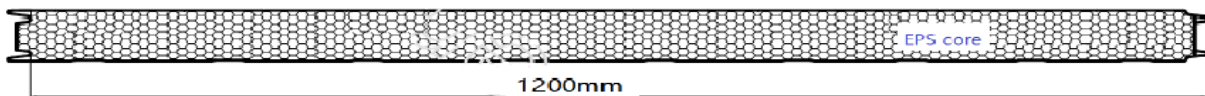


Specification for EPS Insulated Panel

EPS Foam Flat Panel



EPS Foam Ribbed Panel



Eps Foam Manufacture our own EPS Z Lock Panels.

EPS Z Lock Panels come in sizes 50mm, 75mm, 100mm and 150mm.
Our panels are used for anything from Cool Rooms, Freezer Rooms, Heat Rooms and Portable Buildings.
We can produce to most lengths you require but our width is 1200 wide only.

EPS Core:

Compressive Strength on 10% deformation is 85KPA.

EPS Grade:

The Grade used is Standard grade which is 16KG Per cubic.

Colour Steel:

The size of the steel is 0.06mm Galvanised Para coated steel.
The colour the panel comes in is called Grey White, it is only colour this comes in.

Thermal Resistance (R Value):

On Different Thicknesses the R value is;
50mm 1.31
75mm 1.96
100mm 2.62
150mm 3.92

EPS Foam Insulation Test:

Tested on actual thickness to requirements ASTM C518-04

Span Data:

<u>Internal wall and ceiling on 0.5 KPA</u>		<u>External 0.75 KPA</u>		<u>External 1.0 KPA</u>	
50mm	5.0	50mm	4.0	50mm	3.5
75mm	4.9	75mm	4.9	75mm	4.4
100mm	6.9	100mm	5.6	100mm	5.0
150mm	8.5	150mm	7.0	150mm	6.1

Fire Testing Information on Eps (Polyfoam):

AS/NZS 1530.3-1999

Ignitability = 0
Spread of Flame = 0
Heat Evoked = 0
Smoke Developed = -1.7416

EPS panels as per New Zealand climate thickness required for Chillers and Freezer

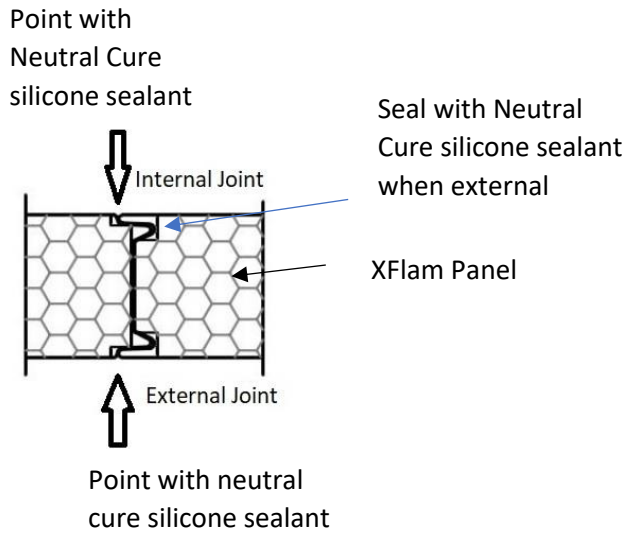
We would prefer 75mm walls for the room for process room and other rooms till 12 C Temperatures.

Any rooms from 12 to -2 C we prefer 100mm thick panels.

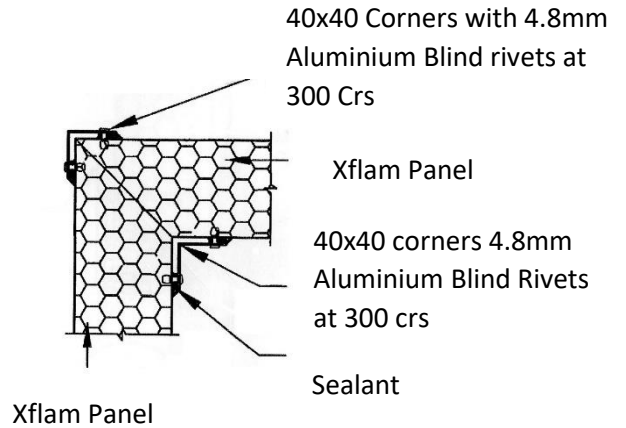
Any room from -2 to -20 C we Prefer 150 mm thickness.

Fixing to EPS Foam Panels.

Panel joint detail section view

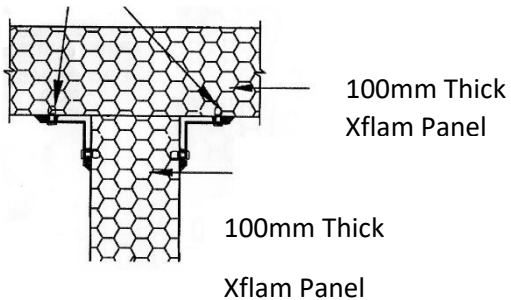


Wall to wall joint detail plan view



Ceiling fixing detail

40x40 corners with 4.8 Aluminium Blind Rivets at 300mm crs



Wall base fixing detail

